

# Wifi Thermostat Mobile App Programming Guide

## Preparation required for Wifi Connection:

You will need a 4G mobile phone and wireless router. Connect the wireless router to the mobile phone and record the WIFI password [you will need it when the thermostat is paired with the Wifi]. Follow the steps below once the thermostat is powered up and you have set the time and date.

### Step 1 Download your app



Android users can search "Smart life" on Google Play, iPhone users can search "Smart life" in the App Store.

### Step 2 Register your account

- After installing the app, click "register" ( Fig 2-1 )
- Please read the Privacy Policy and press Agree to proceed to the next step. (Fig 2-2)
- Registration account name uses your Email Or mobile phone number. Select Region, then click "Continue"(Fig 2-3)
- You will receive a 6-digit verification code via email or SMS to enter your phone (Fig 2-4)
- Please set the password, Password must contain 6-20 letters and numbers. click "Done"( Fig 2-5)

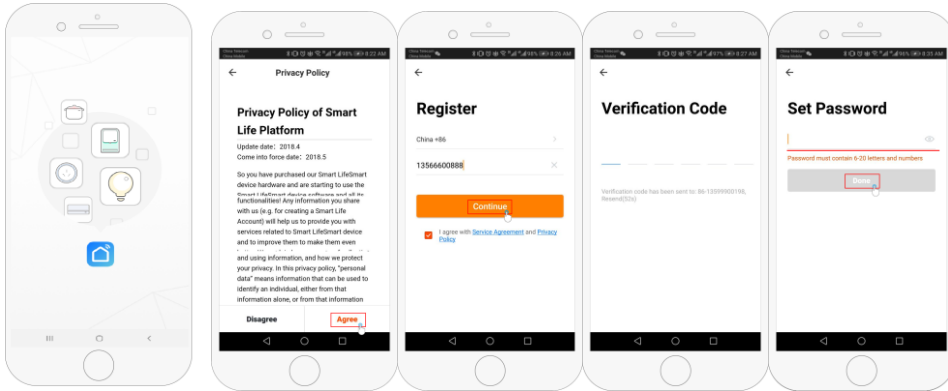


Fig 2-1

Fig 2-2

Fig 2-3

Fig 2-4

Fig 2-5

### Step 3 Create family information(Fig 3-1)

1. Fill in the family name (Fig 3-2 ).
2. Select or add a room (Fig 3-2).
3. Set location permission (Fig 3-3) then set thermostat location (Fig 3-4)

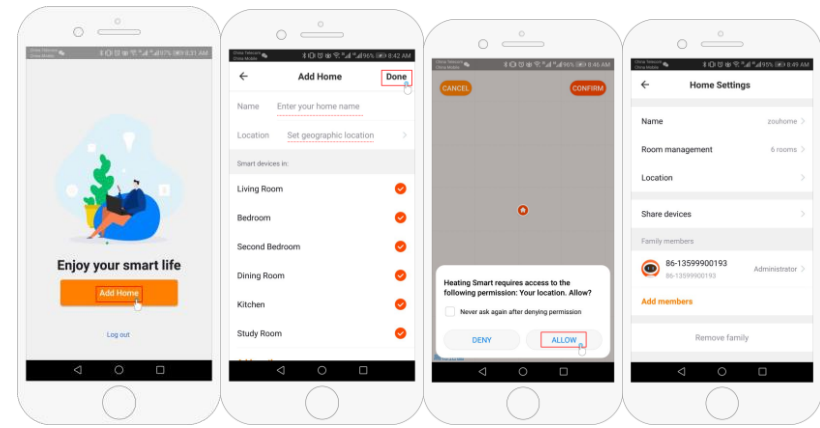


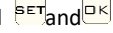

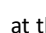

Fig 3-1

Fig 3-2

Fig 3-3

Fig 3-4

### Step 4a Connect your Wi-Fi signal (EZ distribution mode)

1. Go to your Wifi setting on your phone and make sure you are connected via 2.4g and not 5g. most modern routers have 2.4g & 5g connection. 5g connections do not work with the thermostat.
2. On the phone press "Add Device" or "+" in the upper right corner of the app to add the device (Fig 4-1) and under the small appliance section select the device type "Thermostat" ( Fig 4-2 )
3. With the thermostat powered on, press and hold  at the same until both icons(  &  ) flash to indicate the EZ distribution mode. This can take between 5-20 seconds.
4. On your thermostat confirm  icons are rapidly blinking and then go back and confirm this on your app. Enter the password of your wireless router this is case sensitive ( fig 4-4 ) and confirm. The app will connect automatically ( Fig 4-5 ) This may typically take up to 5~90 seconds to complete.

If you get an error message make sure you have entered your correct Wi-Fi password (case sensitive typically found on the bottom of your router) and that you are not on your Wi-Fi's 5G connection.

Your room name can be edited when the device is connected,

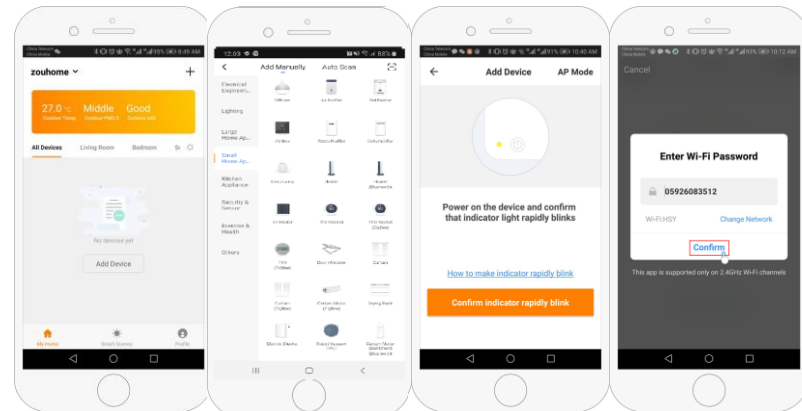


Fig 4-1

Fig 4-2

Fig 4-3

Fig 4-4

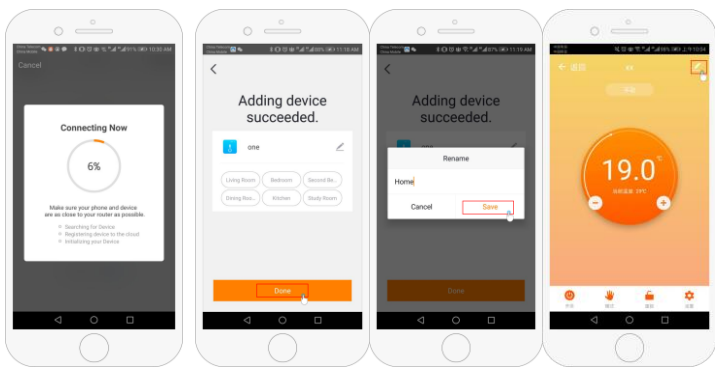


Fig 4-5

Fig 4-6

Fig 4-7

Fig 4-8

### Step 4b (Alternative method) (AP mode pairing) Only do this if step 4a failed to pair the device

1. On the phone press "Add Device" or "+" in the upper right corner of the app to add the device (Fig 4-1) and under the small appliance section select the device type "Thermostat (Wifi)" (Fig 5-1)
2. On the thermostat press power on and then press and hold **SET** and **OK** until flashes. This can take between 5-20 seconds. If also flashes release buttons and press and hold **SET** and **OK** again until just flashes.
3. On the app click "confirm light is blinking slowly"
4. Press on the go to connections icon and select the Wifi signal (Smartlife-XXXX) of your thermostat (Fig 5-3 and 5-4) it will say internet may not be available and ask you to change network but ignore this.
5. Go back to your app and then the app will connect automatically (Fig 4-5)

This may typically take up to 5~90 seconds to complete and will then show confirmation (Fig 4-6) and allow you to change the thermostat name (Fig 4-7)

\*\* NOTE if you are unable to pair the thermostat then reset the unit to factory settings and try again. This can be done by turning the unit off so the screen is blank and then holding SET until A1 appears on the screen. Then tap the SET button until AD is displayed and then hold the OK button until all icons on the screen are displayed at once. After the icons disappear the unit has reset.

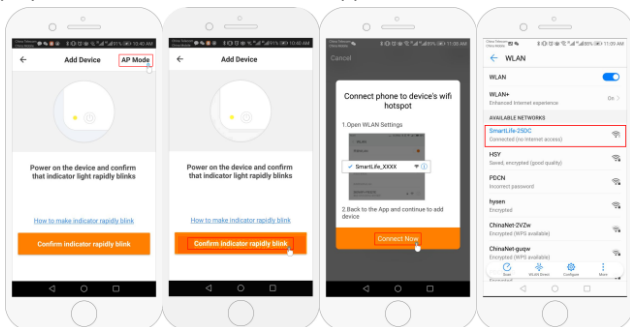


Fig 5-1

Fig 5-2

Fig 5-3

Fig 5-4

### Step 5 Changing sensor type and temperature limit

Press the setting key (Fig 4-8) in the bottom right hand corner to bring up the menu.

Click the Sensor type option and enter password (normally 123456). Then you will be given 3 options:

- (1) "Single built-in sensor" will only use the internal air sensor (DO NOT USE THIS SETTING\*)
  - (2) "Single external sensor" will only use the floor probe (ideal for bathrooms where thermostat installed outside room).
  - (3) "Internal and external sensors" will use both sensors to read the temperature (Most common option).
- Once you have chosen the sensor type, check that "Set temp. max" option is set to a suitable temperature for your flooring (typically 27°C)

\*A floor probe must always be used with electric underfloor heating to protect the flooring.

### Step 6 Programming daily schedule

Press the setting key (fig 4-8) in the bottom right hand corner to bring up the menu, at the bottom of the menu there will be 2 stand alone options called "week program type" and "weekly program setting".

"Week program" type allows you to choose the number of days the schedule applies to between 5+2 (weekday+weekend) 6+1 (Mon-Sat+Sun) or 7 days (all week).

"Weekly program" setting allows you to choose the time and temperature of your daily schedule at varying points. You will have 6 options of times and temperatures to set. See example below.

Part 1	Part 2	Part 3	Part 4	Part 5	Part 6
Wake up	Leave Home	Back Home	Leave Home	Back Home	Sleep
06:00	08:00	11:30	13:30	17:00	22:00
20°C	15°C	20°C	15°C	20°C	15°C

If you do not need the temperature to rise and fall in the middle of the day then you can set the temperature to be the same on parts 2,3 and 4 so that it does not increase again until the time in part 5.

### Additional Features

**Holiday Mode:** You can program the thermostat to be on for a set temperature for up to 30 days so that there is background heat in the house while you are away. This can be found under the mode (fig 4-8) section. You have the option to set the number of days between 1-30 and a temperature up to 27°C.

**Lock Mode:** This option allows you to remotely lock the thermostat so no changes can be made. This can be done by clicking the (Fig 4-8) symbol. To unlock click the (Fig 4-8) symbol again.

**Grouping devices:** You can link multiple thermostats together as a group and control them all simultaneously. This can be done by clicking on the (Fig 4-8) in the top right corner and then clicking the Create Group option. If you have multiple thermostats linked it will allow you to tick each one that you want to be in the group and once you confirm the selection you will be able to name the group.

**Family Management:** You can add other people to your family and allow them to control the devices you have linked. To do this you need to go back to the home page and click on the family name in the top left corner and then click on Family Management. Once you have selected the family you wish to manage there will be an option to Add Member, you will need to enter the mobile number or email address they have registered the app with to send them an invitation. You can set whether or not they are an administrator which allows them to make changes to the device ie removing it.